

MOULDED PARTS & SHAPES

222A111-174

Right angled (90°) non-lipped heat-shrinkable boot

Applications

Used for mechanical protection and cable connector strain relief. As the part does not have a lip it can be installed directly onto the connector accessory thread.

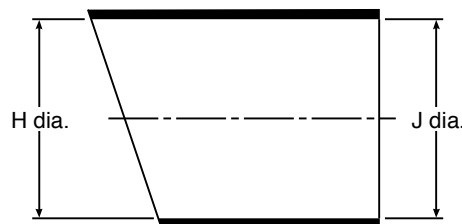
Materials available

- 3 Semi-rigid modified Polyolefin.
- 4 Flexible modified Polyolefin.
- 12 Modified Fluoro-elastomer.
- 25 Fluid resistant modified Elastomer.
- 100 Low fire hazard material.

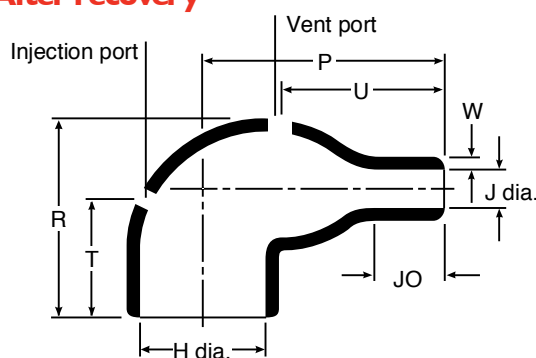
Coatings available

- 3 & -4 /42 General purpose hot melt adhesive.
- /86 High performance hot melt adhesive.
- 25 /42 General purpose hot melt adhesive.
- /86 High performance hot melt adhesive.
- /225 Pre-coated curing adhesive.
- 100 /86 High performance hot melt adhesive.
- /180 Low fire hazard hot melt adhesive.

A) As supplied



B) After recovery



Dimensions (all dimensions are in mm's)

	A) Dimensions as supplied (min)				B) Dimensions after heating recovery (max)								Weight
	H	J	J	J	H	J	P	R	T	U	JO	W	
							±10%	±10%	±10%	±10%	±10%	±20%	
Material*			-12	-100									
Part Number													
222A111	17.8	17.8	9.9	10.9	7.9	3.8	17.3	20.1	19.1	11.4	4.3	1.02	0.9g
222A121	24.9	24.9	18.0	16.0	10.2	5.3	21.3	22.6	19.1	14.7	5.8	1.27	1.4g
222A132	30.0	30.0	20.6	21.1	14.2	6.4	26.9	26.7	19.1	17.8	7.1	1.52	2.9g
222A142	32.5	32.5	22.9	22.9	17.3	6.9	36.6	30.5	19.1	24.9	10.2	1.78	5.4g
222A152	36.1	36.1	26.4	27.4	21.8	8.4	43.7	35.1	19.1	30.0	12.7	1.78	7.7g
222A163	43.9	43.9	27.4	28.4	27.4	9.4	53.6	43.9	19.1	34.0	17.3	2.03	13.0g
222A174	53.1	53.1	46.7	48.3	33.8	15.0	75.7	52.8	25.4	53.3	32.0	3.3	31.0g

Note: *Dimensions apply to all available materials, unless otherwise stated.

Ordering Information

- Standard colour: 0 = (Black).
- Size selection: To determine the size of the required moulded part, please refer to table.
- Modifications: -00 = Potting ports (Injection & Vent ports as indicated above).
- Standard packaging: Moulded parts are individually packaged.
- Ordering description: Specify the product name, size, material, coating and modifications required.
- Ordering Example:** To fit a 11mm connector, using -25 material in black = **222A121-25-0**.
or using -100 material with hot melt adhesive = **222A121-100/86-0**.

Note: For a detailed description on how to construct your moulded part, please refer to the **Moulded Part Numbering Guide**. Larger sizes are also available on request, for more information please contact **IS-Rayfast**.